

**Too-free, Hassle-free**  
Installation with Bare Hands



# PC310

## Tool-less Micro ATX Mini-tower Chassis

### Features & Benefits

- Support Intel Sandy-Bridge platform thermal requirement
- One-piece formed rear window for strong resistance
- Removable side covers on both sides
- Support 92mm front and 120mm rear fan installation
- Patented tool-less mechanism on drive bay and PCI card holder
- Security provision:  
Padlock loop, Kensington slot and intrusion switch
- Optional 2-bay 3.5" HDD cage

### Specification

<b>Model Name</b>	• PC310
<b>M/B Form Factor</b>	• Micro ATX
<b>Dimension (D×W×H)</b>	• 375 x 198 x 370 (mm), 14.7" x 7.8" x 14.6"
<b>Drive Bay</b>	• External : 5.25" x 2, 3.5" x 1 or 2 • Internal : 3.5" x 2
<b>PSU Form Factor</b>	• PS/2
<b>Indicator</b>	• Power Status x 1, HDD Activity x 1
<b>Front Control</b>	• Power On/Off, USB 2.0 x 2, Audio x 2
<b>System Security</b>	• Kensington Slot, Padlock Loop, Intrusion Switch(option)
<b>Cooling Fan</b>	• Front : 80 mm x 1, or 92 mm x 1 • Rear : 80 mm x 1, 92 mm x 1 or 120 mm x 1
<b>Slot Opening</b>	• Full Height x 4
<b>Sheet Metal Material</b>	• SECC
<b>Metal Thickness</b>	• 0.7 mm

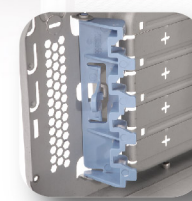


## PC310 Series

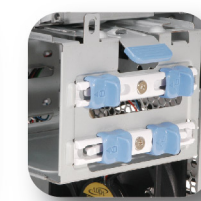
Front Bezel Options



Patented tool-less drive locking system



Tool-less PCI card holder



Optional detachable cage 2-bay 3.5" HDD cage



One piece formed rear window for strong resistance



Enlarged side venting area for socket 1155/1156 platforms

Front Control : System Reset (Bezel Dependant), IEEE 1394 (Option)

Rear View



Inside View



Front View

